

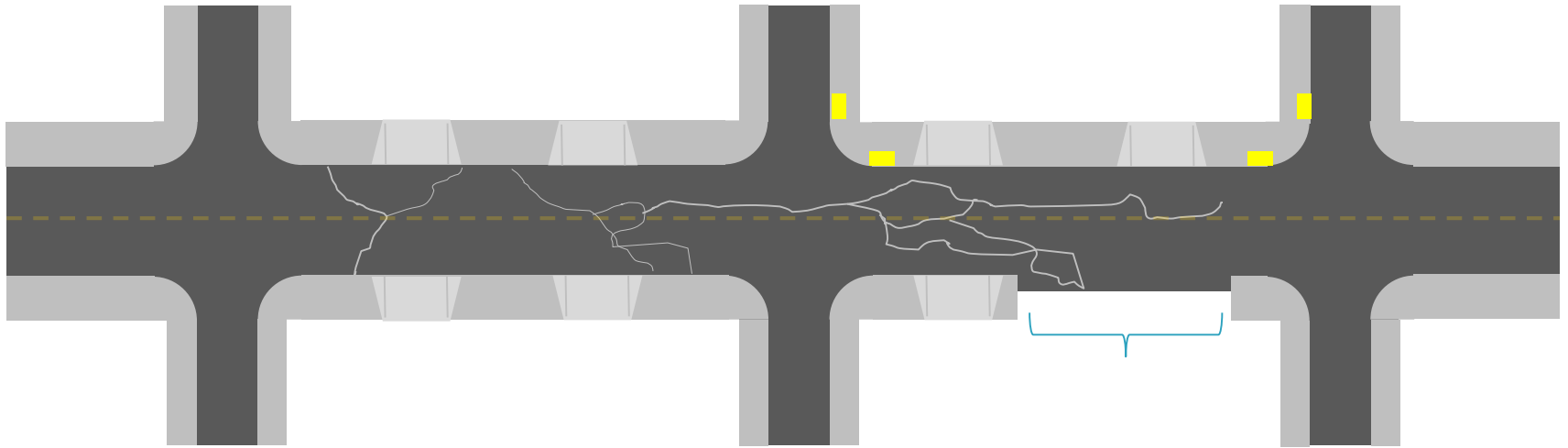


Capital Maintenance Programming Approach Information Briefing

Ryan Head, AICP CTP
Planning Supervisor
October 28, 2020

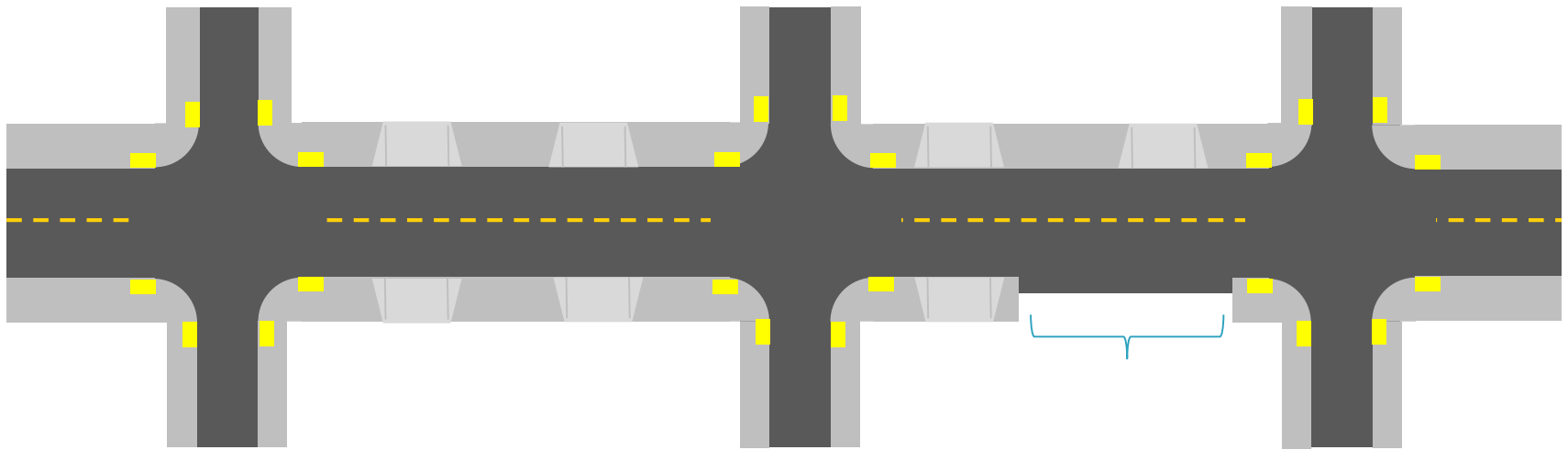
**Our Mission: We drive quality transportation for all Ada County...Anytime,
Anywhere!**

Identifying Needs



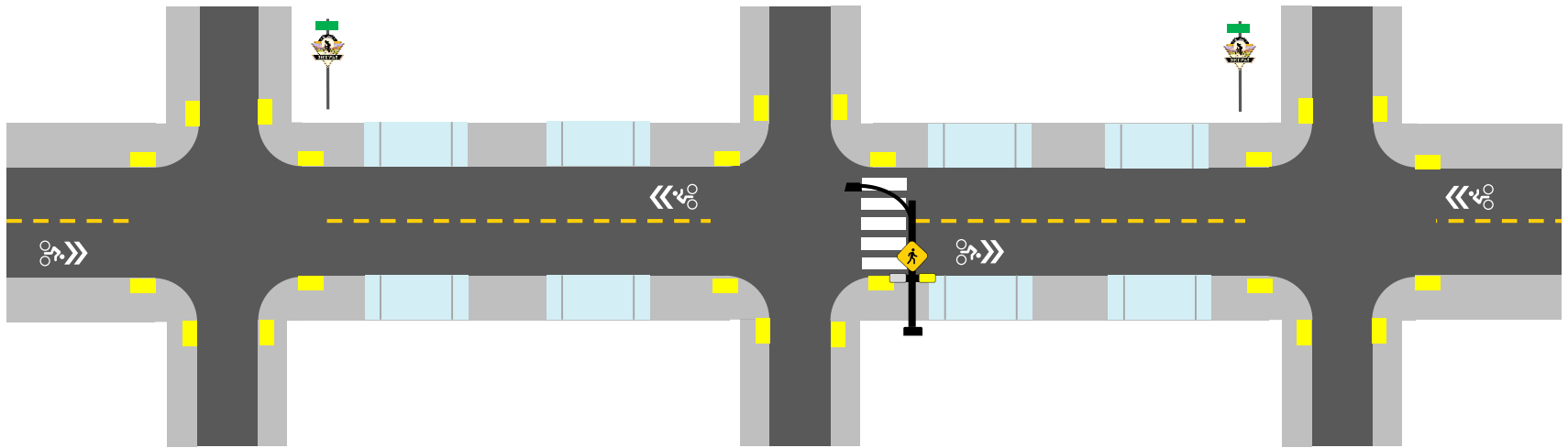
- **Pavement Evaluation (Pavement Management, PCI, Geotechnical Study, etc)**
- **ADA Curb Ramp Inventory**
- **Pipe Evaluations**

Current Maintenance Approach



- Rehabilitate Asphalt
- Improve Curb Ramps
- Replace Pipe
- Restripe Paint
- No Right-of-Way

Integrated Maintenance Approach



Current Approach +

- Enhanced Crossings
- Bikeway Signage

- Accessible Sidewalks
- Filling Key Sidewalk Gaps



Purpose of New Approach

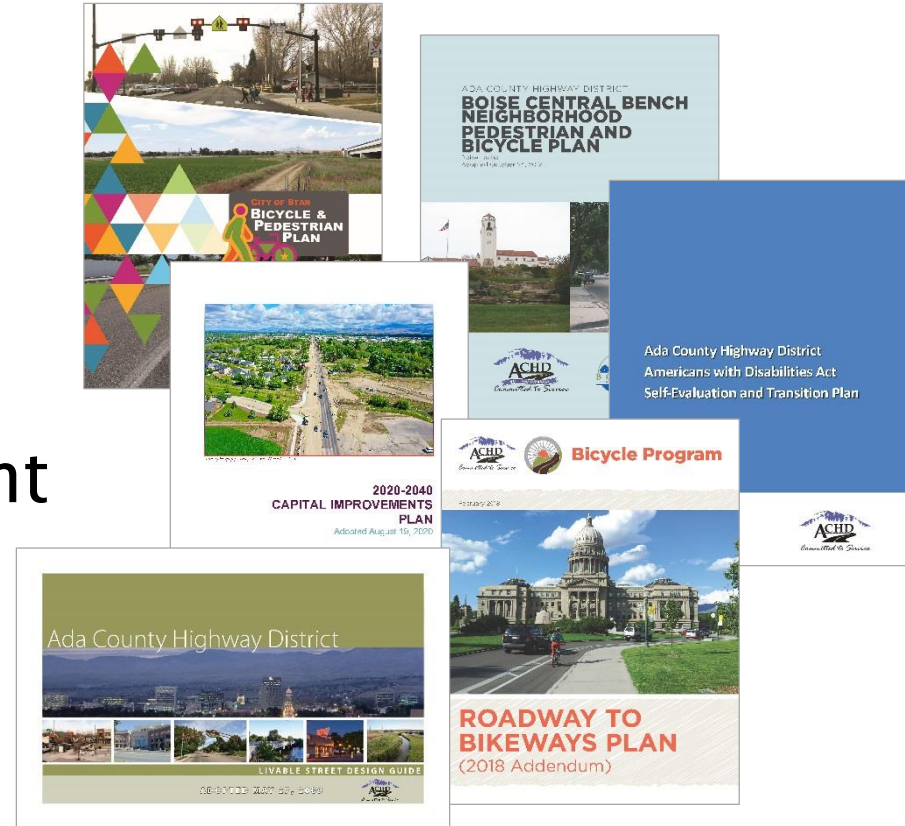


- Increased Emphasis on Accessibility
- Focus on Sidewalk Gaps
- Complete Streets Policy
- Public Expectation
- Efficient Construction
- Accelerates Buildout
- Better Project Outcomes

Project Additions



- ADA High Priority Sidewalk
- Key Ped Gap
- Bikeway Signage
- Crossing Improvement
 - Signals
 - Bulbouts
- Bike Shoulder
- Turn Pocket



Project Additions Will
Come from
Commission-Adopted
Plans

Key Considerations



- Right-of-Way Acquisition
- Longer Project Development Time
- More Public Outreach
- Additional Cost/Staff Burden per Project

Capital
Maintenance
Projects Will Now Be
Complete Capital
Projects

Next Step



- Implement Integrated Maintenance Approach
 - Begin scoping maintenance projects
 - Describe full scope of improvements in the IFYWP
 - Review financial impact through next IFYWP

<https://achd.maps.arcgis.com/apps/View/index.html?appid=eba83ec2eaa45afbc59316a8cf4e726>

Comments or questions ?

Our Mission: We drive quality transportation for all Ada County...Anytime, Anywhere!